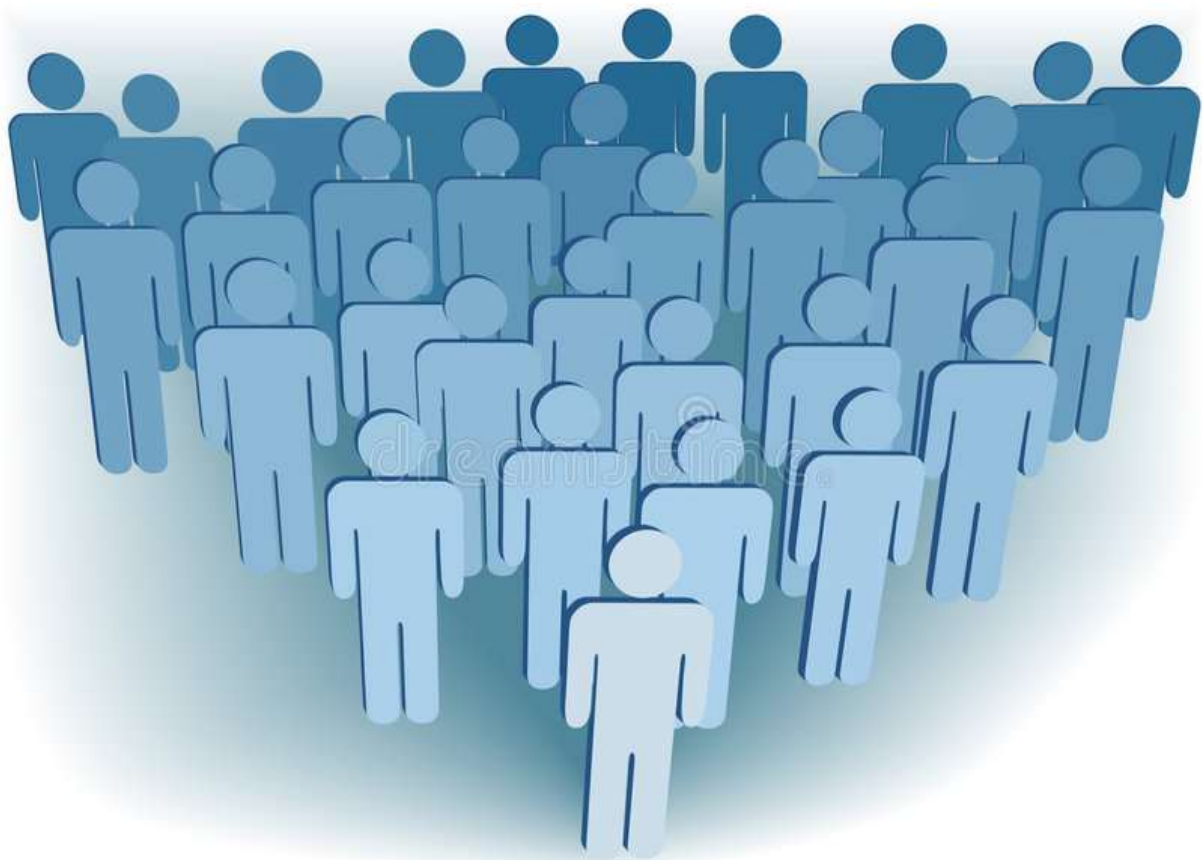




User Manual- Area Frame
7TH POPULATION & HOUSING CENSUS – 2022 THE DIGITAL CENSUS



VERSION

Name	Date	Reason For Changes	Version
User Manual – Area Frame	28-11-2022	First Draft	1.0.0

Contents

1	Overview	4
2	Scope	4
3	Area Frame Module	4
3.1	Process Flow	4
3.1.1	Login screen	5
3.1.2	Home Screen	6
3.1.3	Edit Hierarchies	7
3.1.4	Hierarchy Information of Polygon.....	9
3.1.5	Filter Map-Rural Search	10
4	Addition of Polygon	11
5	FAQs	12

1 Overview

Evolution of technology has played vigorous role in the governance of a country. Government agencies are continuously striving to improve good governance through the means of information technology. Conduction of periodic and accurate Census of population is considered as a key parameter for good governance. Developed Countries in the world are now executing census exercises through digital means to ensure the precision and accuracy of population data, in minimum time frame, as it becomes the basis for policy making and implementation. The proposed exclusive technical IT solution by NADRA will be carried out by mapping census operations through the use of global positioning system and **geographical** information system in Pre-Census, Census and Post Census stages. The android base house listing and enumeration applications shall have online & offline support with Seamless data synchronization feature whenever it is connected online

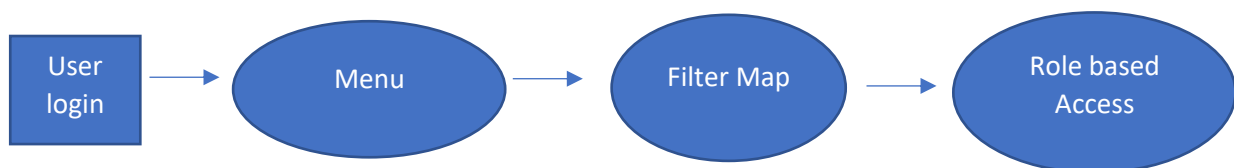
2 Scope

This user manual instructs the end users to manage different hierarchies i.e. Province wise, Division wise, and District wise up to the block level. User can manage and view the hierarchy boundaries as per its respective level and tiers. In addition to that respective census districts can also be managed.

3 Area Frame Module

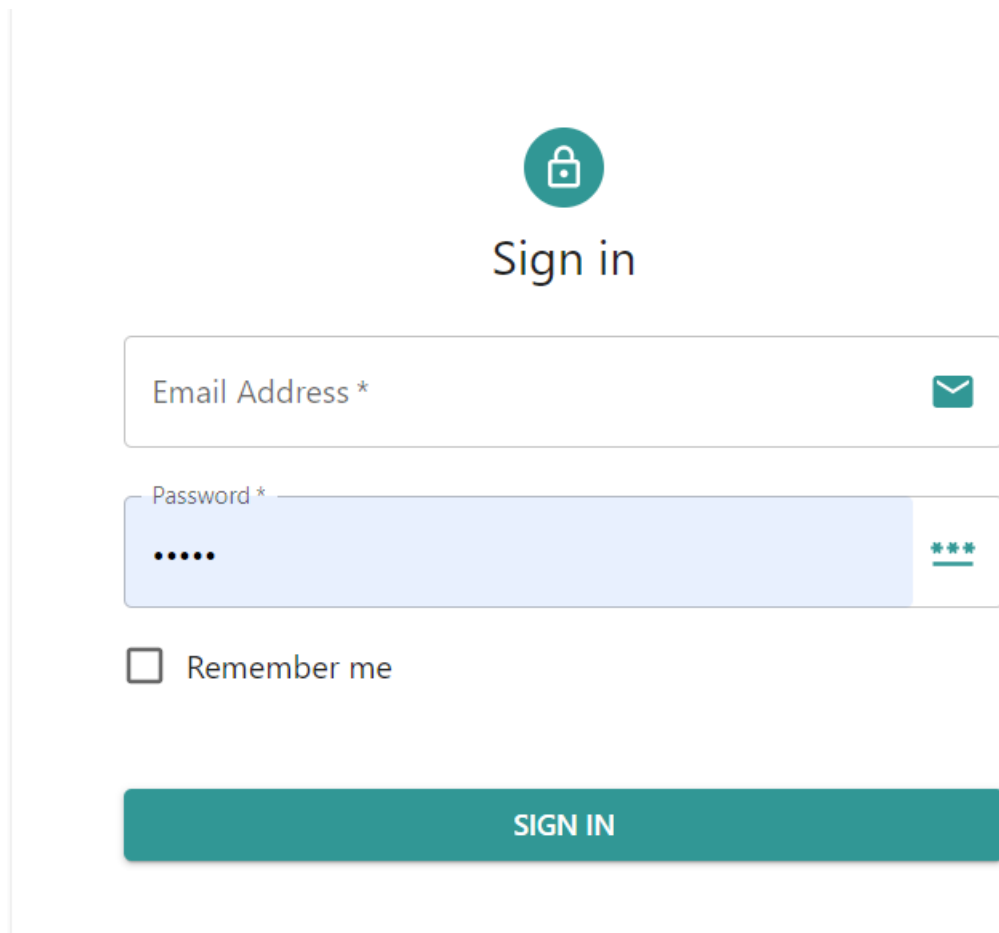
Area frame module manages hierarchies, province wise, division wise, and district wise up to the block level. It manages the hierarchy boundaries, and Census district role based access is assigned by Admin to CDO and Viewer

3.1 Process Flow



3.1.1 Login screen

- Enter Username and Password
- Click 'Sign In'



The login screen features a teal circular icon with a white padlock symbol at the top center. Below the icon, the text "Sign in" is displayed in a large, dark grey font. Underneath, there are two input fields: the first is labeled "Email Address *" and has a teal envelope icon on its right side; the second is labeled "Password *" and has a light blue background, five black dots for the password, and a teal "Show/Hide" icon (three asterisks) on its right side. Below the password field is a checkbox labeled "Remember me". At the bottom of the form is a wide, teal button with the text "SIGN IN" in white, uppercase letters.

3.1.2 Home Screen

- After logging in home screen as shown in figure 1.1 appears, on left side of screen **menu** is situated while at the Right corner **filter map** option is available



Figure 1.1

- By clicking on **menu** option, Screen shown in Figure 1.2 appears , while clicking on **filter** **map** options at figure 1.3 appears



Figure 1.2

- Menu** option as shown in figure 1.2 has map, edit hierarchies, task, help and logout options “Map Option” enables the user to see map along with Polygon boundaries

- **Edit hierarchies** helps user to add or remove blocks, but adding or removal of blocks must be based on solid grounds (correspondence, letter, office order), and subsequently, Initiate request and attach the concerned letter. The Admin user role has the privilege to accept or reject any particular change.
- **Task** option has a view of number of tasks forwarded for various purposes by census district officer (CDO). Request for addition of tehsil/block by CDO is reflected in admin tasks inbox, admin has the authority to accept or reject. Acceptance or rejection of tasks are also shown in CDO task inbox

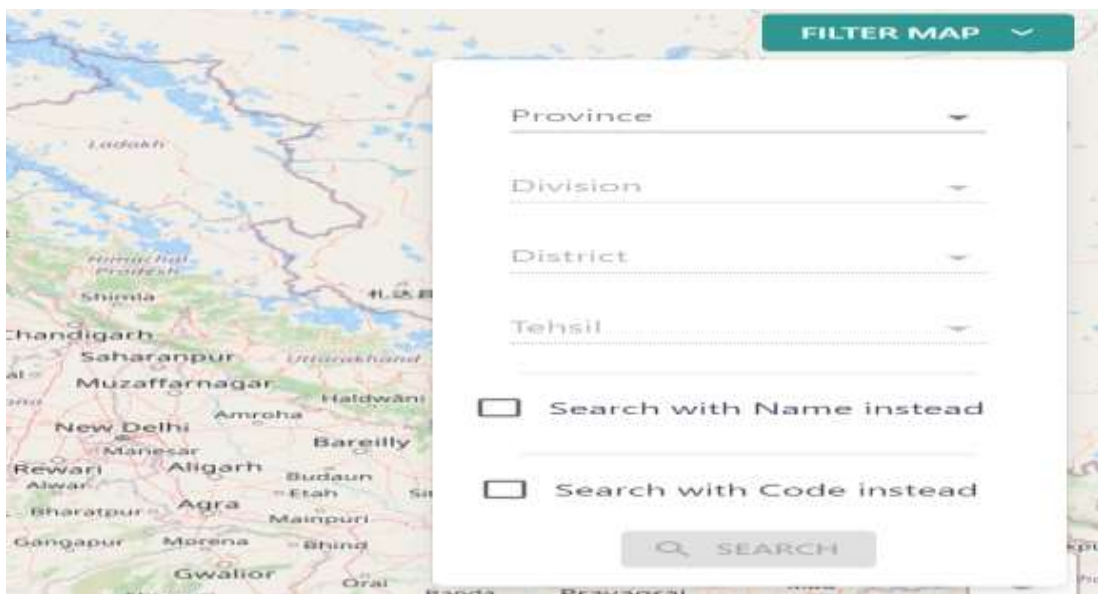


Figure 1.3

- Filter map option as attached in figure 1.3 enable user to see the desired polygon, and also has the option to search with name and search with code

3.1.3 Edit Hierarchies

- The Edit Hierarchies screen reflects (attached as figure 1.4) different categories such as province, division, district and tehsil and it is used to add or remove blocks.
- CDO will initiate request for addition or removal of blocks based on solid evidence/ official communication (it can be any letter or correspondence). The letter for addition or removal action must attached with initiated request for record
- Urban and rural options are available on edit hierarchies to have clear division of area for rural areas such as qanoon halqa, patwar circle, and rural block, whereas urban

division of the area starts from municipal corporation, charge, circle and block

The screenshot shows a web interface titled "EDIT HIERARCHIES" with the subtitle "Edit geographical Area in Area frame". The form contains several dropdown menus and radio buttons for selecting geographical levels. The first section includes dropdowns for "Province", "Division", "District", and "Tehsil", each with a "+" icon to its right. Below these is a radio button group with "Urban" selected (indicated by a green dot) and "Rural" (indicated by an empty circle). The second section includes dropdowns for "Municipal Corporation", "Charge", "Circle", and "Block", each also with a "+" icon to its right.

Figure 1.4

- Add new Province screen as shown in figure 1.5 enables user to add new province.
- While processing Province addition request attachment of relevant letter must be attached for record.
- Subsequently the said request will be forwarded in admin task inbox for approval, admin has the rights to accept or reject the request/task

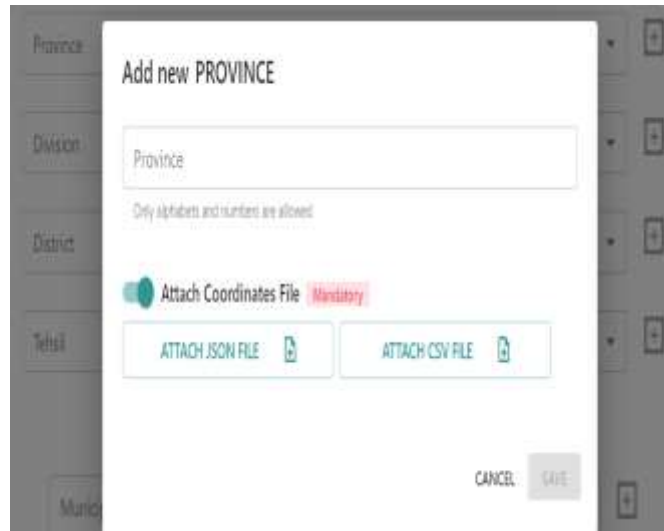


Figure 1.5

- Edit hierarchy also give user/ CDO the privilege for deletion of district, concern CDO will initiate a request to Admin while attaching the required letter through attached coordinates file (attached in Figure 1.5)
- Deletion of district screen shot is attached as figure 1.6



Figure 1.6

3.1.4 Hierarchy Information of Polygon

- After selecting a polygon and by Right Clicking on the same polygon information about polygon will appear regarding district, division, patwar circle, province, qanoon halqa, tehsil and name. Picture is attached as figure



Figure 1.7

- Rather opening a separate window for acquiring information about polygon hierarchy information, by just right clicking on polygons all relevant information will appear

3.1.5 Filter Map-Rural Search

- In Rural options (attached as Figure 1.8) code type tab three categories are displayed qanoon halqa, patwar circle, and rural block.
- Select the concern code type from Drop Down list

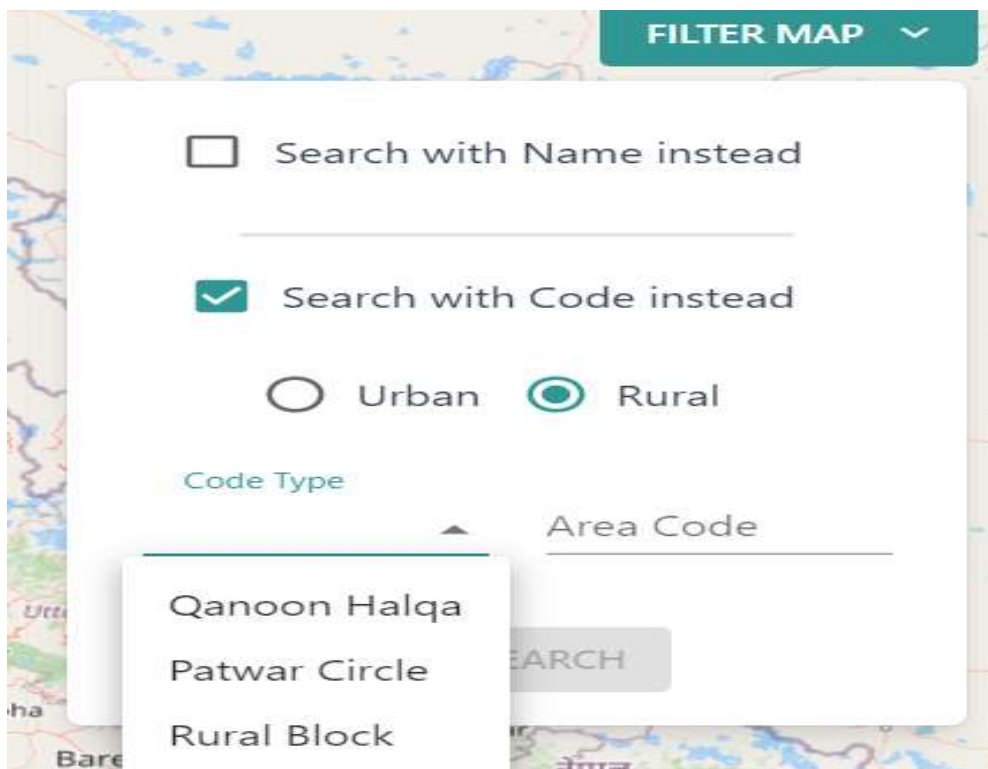


Figure 1.8

- Filter map facilitate the user to have multiple search option as per requirement

- Role based access is used to have different levels of access (admin, CDO, and viewer), Admin has all the rights to assign different tasks to enumerators, circle supervisor etc and can give permission for adding or removal of blocks. Whereas, CDO has access of his concern census district only where he can forward any request to admin for addition or deletion of blocks. In addition the viewer can only view different reports and progress

4 Addition of Polygon

- Task forwarded by CDO/ user for addition of new polygon, both i.e previous and current are displayed, Task status is approved and updated as shown below in figure 1.9,
- in case of approved status both reject and approve button appears as inactive/disabled
- Figure 1.9 also shows various task initiated by different user

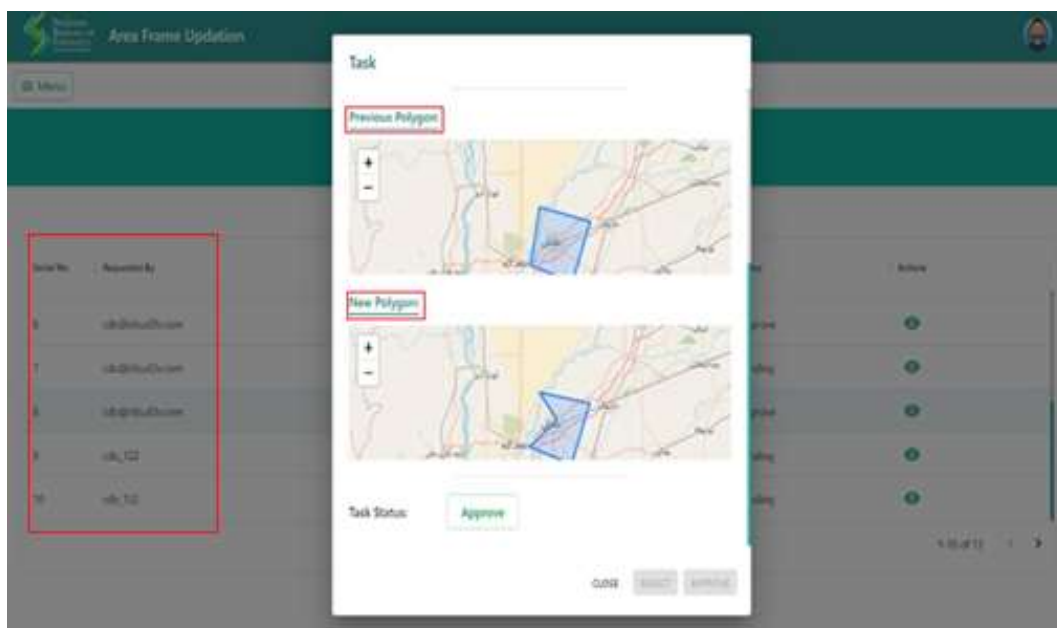


Figure 1.9

5 FAQs

Q1: Is there any procedure to add or remove district in a province?

Ans : Press menu button at the left side of home screen, press edit hierarchy option the screen allows user to add or remove district.

Q2: How do you know about the status of accepted or rejected tasks?

Ans: Press menu button at the left side of the home screen, press tasks option the screen allows you to see the status of the tasks.

Q3: How can a user access the information about the polygon?

Ans: Right click on the polygon, details about the select polygons will be displayed.